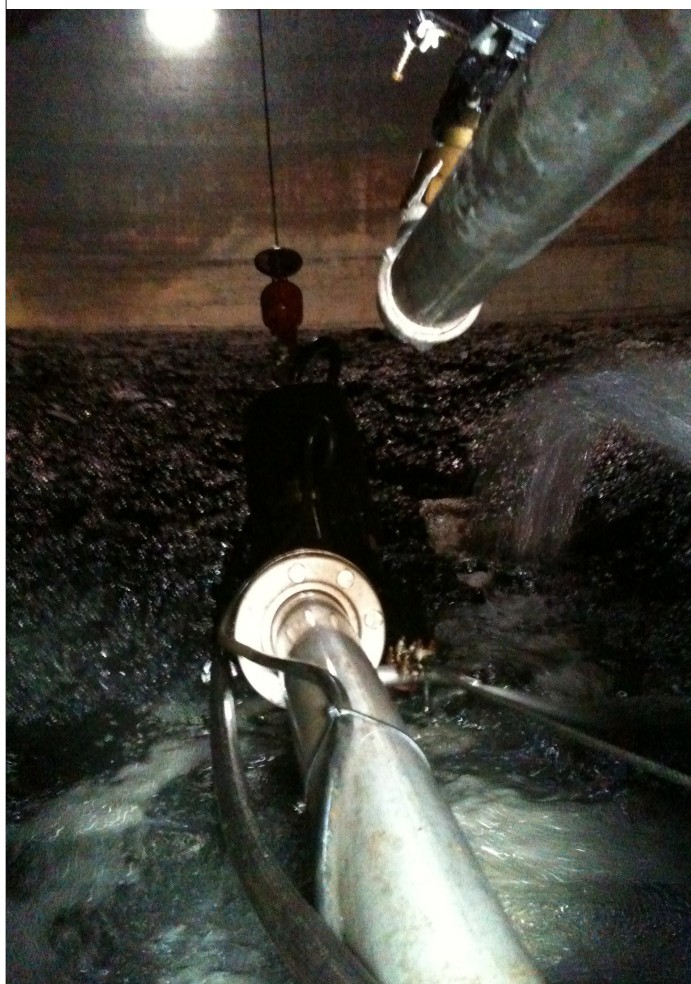


# Anaerobic digester sludge dewatering



**Place:** UTE EDAR Butarque (Madrid)  
**Sludge type:** High solids sludge from an anerobic digester in a WWTP  
**Equipment:** Mobile unit up to 90 m<sup>3</sup>/h, long conveyor and extraction set  
**Treated volume:** 9.000 m<sup>3</sup>